



3.11 Network Status Indicate LEDs

Table 2.7 lists the descriptions for Indicate LEDs that tell the network status.

LED Name	W7100 Pin Name	DIR.	Description
10/100	SPDLED	O	Network speed indicate LED Low : 100Mbps , High : 10Mbps
FDX	FDXLED	O	Full / Half duplex indicate LED Low : Full duplex , High : Half duplex
COL	COLLED	O	Collision detect LED Low : Collisions occurred (only in half duplex mode)
RX	RXLED	O	Active Low. Receive activity LED
TX	TXLED	O	Active Low. Transmit activity LED
LINK	LINKLED	O	Active Low. Network link status indicate LED
ACT	ACTLED	O	Active Low. Rx or Tx activity LED
PLOCK	PLOCK	O	Active High. It notifies when internal PLL is locked.

Table 3.4 Description of Status indicate LED

3.12 Character LCD Connector (JP1)

Character LCD Connector (JP1) is for Debugging and showing the system status.

Pin descriptions of Character LCD Interface are as followed.

PIN#	iMCU7100EVb Board PIN NAME / Character LCD PIN NAME	DIR.	Description
1	GND / VSS		Signal Ground
2	5V / VDD	I	LCD Power Supply
3	V0 / V0	I	Voltage for LCD drive
4	P0_0 / RS	I	Data / Instruction register select
5	P0_1 / RW	I	Read / Write
6	P0_2 / E	I	Enable signal,start data read / write
7 - 14	P2_0 ~ P2_7 / DB0 ~ DB7	I/O	Data Bus Line
15	Not Connect / LED A	O	LED Anode, power supply+
16	Not Connect / LED K	O	LED Cathode, ground 0V

Table 3.5 Character LCD Interface Pin Description

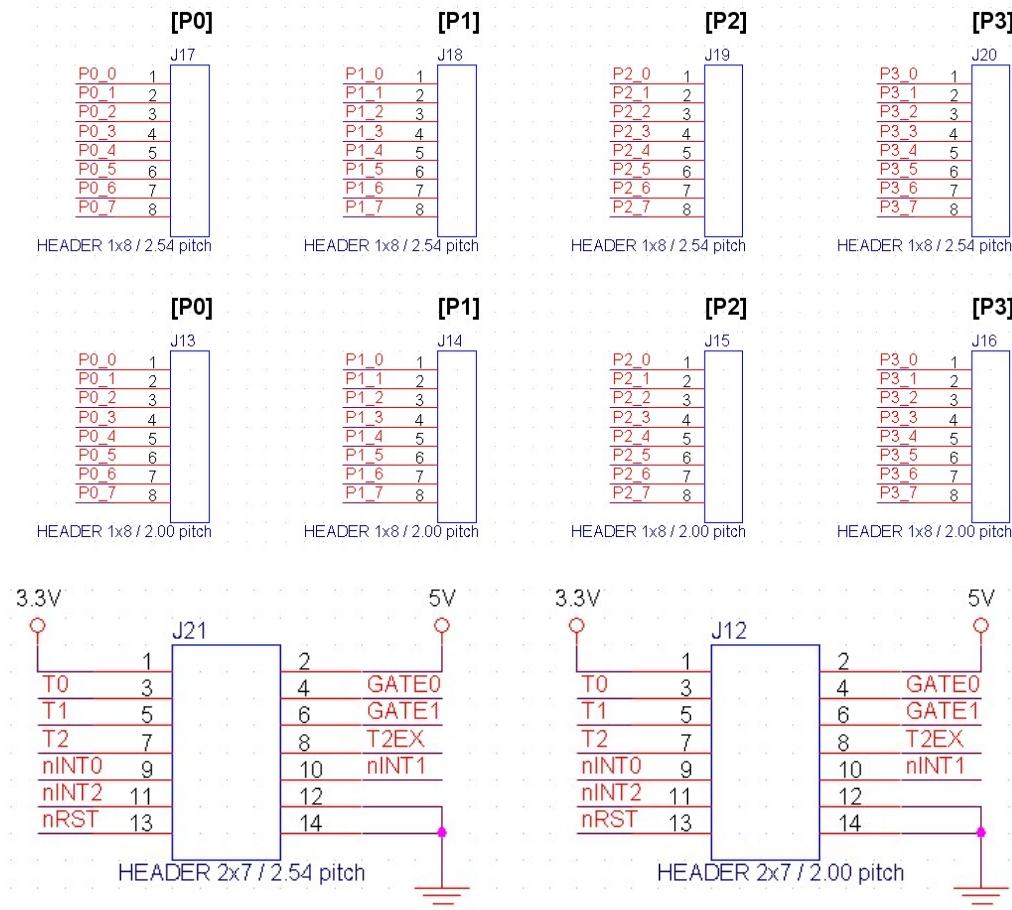
- Please refer to LCD Datasheet (LC1624-R2.pdf) for more details on driving Character LCD.

3.13 MCU Port Expansion Pin header Hole (J1 ... J10)

W7100 provides two types of pitch from the total of 32pin (8bit x 4Port) IO pin. User can select according to their needs between 2.54mm Pin pitch and 2.00mm Pin pitch.

iMCU7100EVB board provides four ports of IO to allow users to use with the general pin header.

The description of port expansion is as followed.



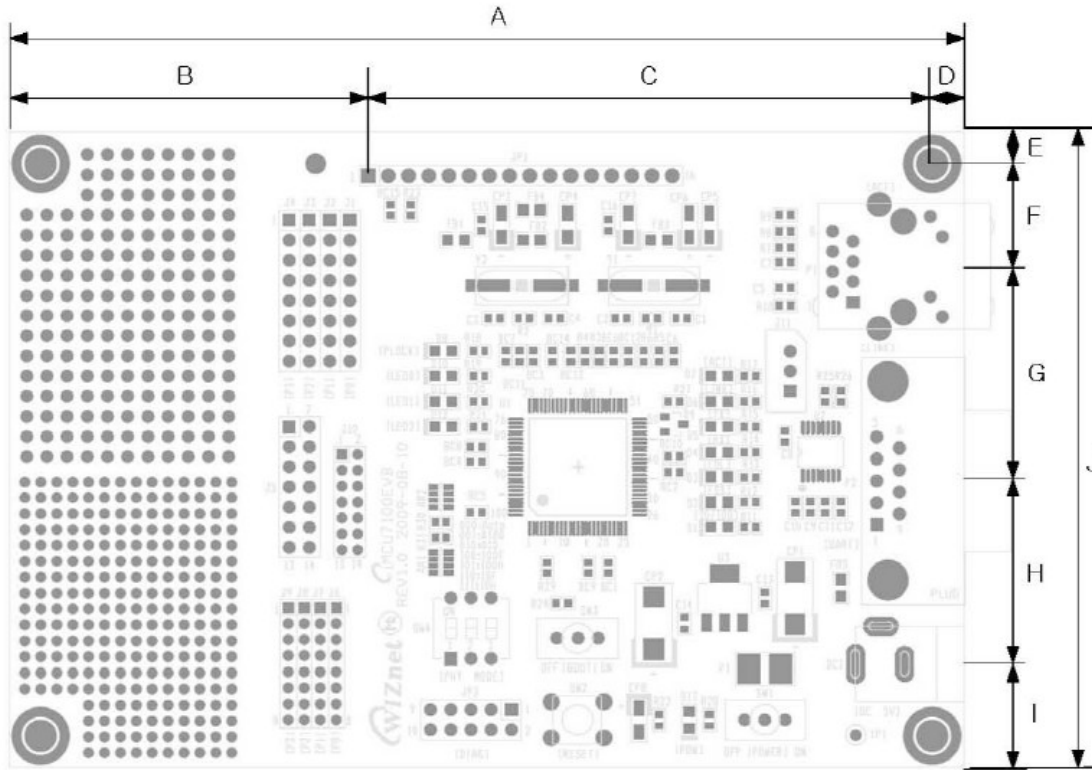
<Fig.3.4> Port Expansion Connector

3.14 Dummy Pin Header Hole

Dummy pin header holes are not connected with system circuits. The dummy pin header hole is provided into two types: 2.54mm pitch and 2.00mm pitch.

By using dummy hole, users can test external devices that are in need of additional tests.

4 Dimension



<Fig.4.1> iMCU7100EVB Dimension

Symbols	Dimensions (mm)	Symbols	Dimensions (mm)
A	120.00	F	12.30
B	45.10	G	27.70
C	70.90	H	23.20
D	4.00	I	12.80
E	4.00	J	80.00

Table 4.1 iMCU7100EVB Board Dimension



Document History Information

Version	Date	Description
Ver.0.9beta	Sep. 2009	Release with W7100 launching